





Accessories for pneumatic stroke and rotary actuators of the CLASSIC, ELEMENT and INOX series

- Complete modular designed accessory program
- More for less – optimal configuration costs
- Easy maintenance and commissioning
- Increase system and operational safety

Product variants described in the data sheet may differ from the product presentation and description.

Can be combined with

	Type 2000 ▶ Pneumatically operated 2/2-way angle seat valve (Type CLASSIC)
	Type 2006 ▶ Pneumatically operated 3/2-way seat valve CLASSIC
	Type 2030 ▶ Pneumatically operated 2/2-way diaphragm valve with plastic body (Type CLASSIC)
	Type 2031 ▶ 2/2-way diaphragm valve with pneumatic plastic actuator (Type CLASSIC)
	Type 2012 ▶ Pneumatically operated 2/2-way globe valve (Type CLASSIC)
	Type 210X ▶ ELEMENT process valves

Type description

The modular designed accessory option package is the comprehensive addition to the Bürkert process valves with pneumatic actuators. The flexible, easily accessible concept of modular accessories has been designed to cover individual application requirements in a cost-effective way.

The design has been optimized for easy installation (retro-fitting), commissioning and operation.

Table of contents

1. Product accessories overview	3
2. Product accessories	4
2.1. Pneumatic control/electrical feedback unit	4
Type 8697 and Type 8690 for on/off process valves	4
Type 8691 and Type 8695 for decentralised automation of on/off ELEMENT-und CLASSIC process valves	5
2.2. Type 1060 – Electrical position feedback for CLASSIC and ELEMENT valves	6
Dimensions	6
Ordering chart	6
2.3. Proximity switch adapters for CLASSIC, ELEMENT and INOX valves	7
Dimensions	7
2.4. Stroke limiter for stroke actuators for CLASSIC valves	10
General technical data	10
Dimensions	10
Ordering chart	11
2.5. Stroke limiter for stroke actuators for ELEMENT valves	11
General technical data	11
Dimensions	12
2.6. Stroke limiter for linear actuators for INOX valves	13
General technical data	13
Dimensions	14
2.7. Handwheel for linear actuators for CLASSIC valves.....	16
Dimensions	16
2.8. Ordering chart assembly spanner (for CLASSIC drive cover).....	16
2.9. NAMUR adapter for pilot valves for CLASSIC valves.....	17
General technical data	17
Dimensions	18
Ordering chart	18
2.10. Type SY02ST – Electrical position feedback for INOX valves with actuator size Ø 32 (B).....	19
General technical data	19
Dimensions	19
Ordering chart	19
2.11. Type SC02 Electrical position indicator for INOX valves in actuator size Ø 32 (B)	20
2.12. Drive blocking 206x SF A.....	20
2.13. Dead man’s handle 206x SF A.....	21
Dimensions	21
Ordering chart	21
2.14. Stroke limitation on Type 869x ELEMENT	22
Ordering chart	22
2.15. Stroke limitation on Type 869x CLASSIC.....	22
Ordering chart	22

DTS 1000102756 EN Version: AF Status: RL (released | freigegeben | valide) printed: 24.07.2024

1. Product accessories overview

Product features			
CLASSIC (Type 2000, Type 2012, Type 2006, Type 2030, Type 2031, Type 2032, Type 2033)			
Type	Description	Actuator size Ø [mm]	Further information
Type 8697	Electrical position feedback	40 (C)...225 (L)	"2.1. Pneumatic control/electrical feedback unit" on page 4
Type 8695	Control head/electrical feedback unit	40 (C) 50 (D)	"2.1. Pneumatic control/electrical feedback unit" on page 4
Type 8691	Control head/electrical feedback unit	63 (E)...225 (L)	"2.1. Pneumatic control/electrical feedback unit" on page 4
Type 1060	Position feedback	40 (C)...225 (L)	"2.2. Type 1060 – Electrical position feedback for CLASSIC and ELEMENT valves" on page 6
–	Adapter for proximity switch	40 (C)...225 (L)	"2.3. Proximity switch adapters for CLASSIC, ELEMENT and INOX valves" on page 7
–	Stroke limitation	40 (C)...225 (L)	"2.4. Stroke limiter for stroke actuators for CLASSIC valves" on page 10
–	Handwheel for linear actuators	50 (D)...125 (H)	"2.7. Handwheel for linear actuators for CLASSIC valves" on page 16
–	NAMUR adapter	50 (D)...125 (H)	"2.9. NAMUR adapter for pilot valves for CLASSIC valves" on page 17
–	Mounting spanner	40 (C)...125 (H)	"2.8. Ordering chart assembly spanner (for CLASSIC drive cover)" on page 16
–	Stroke limitation on Type 869x	50 (D)...125 (H)	"2.15. Stroke limitation on Type 869x CLASSIC" on page 22
ELEMENT (Type 2100, Type 2300, Type 2101, Type 2301, Type 2106, Type 2103, Type 2104, Type 2105)			
Type 8697	Electrical position feedback	50 (D)	"2.1. Pneumatic control/electrical feedback unit" on page 4
Type 8690	Electrical position feedback	70 (M)...130 (P)	"2.1. Pneumatic control/electrical feedback unit" on page 4
Type 8695	Control head/electrical feedback unit	50 (D)	"2.1. Pneumatic control/electrical feedback unit" on page 4
Type 8691	Control head/electrical feedback unit	70 (M)...225 (L)	"2.1. Pneumatic control/electrical feedback unit" on page 4
Type 1060	Electrical position feedback	50 (D)...130 (P)	"2.2. Type 1060 – Electrical position feedback for CLASSIC and ELEMENT valves" on page 6
–	Adaption for inductive proximity switch	50 (D)...130 (P)	"2.3. Proximity switch adapters for CLASSIC, ELEMENT and INOX valves" on page 7
–	Stroke limitation	50 (D)...225 (L)	"2.5. Stroke limiter for stroke actuators for ELEMENT valves" on page 11
–	Stroke limitation on Type 869x	70 (M)...130 (P)	"2.14. Stroke limitation on Type 869x ELEMENT" on page 22
INOX (Type 2060, Type 2063, Type 2064, Type 2065, Type 2080)			
Type 8697	Electrical position feedback	50 (D)...130 (P)	"2.1. Pneumatic control/electrical feedback unit" on page 4
Type SY02ST	Electrical position feedback	32 (B)	"2.1. Pneumatic control/electrical feedback unit" on page 4
Type SC02	Electrical position feedback	32 (B)	"2.11. Type SC02 Electrical position indicator for INOX valves in actuator size Ø 32 (B)" on page 20
–	Adaption for inductive proximity switch	50 (D)...130 (P)	"2.3. Proximity switch adapters for CLASSIC, ELEMENT and INOX valves" on page 7
–	Stroke limitation	32 (B)...130 (P)	"2.6. Stroke limiter for linear actuators for INOX valves" on page 13
–	Actuator blocking	50 (D)...130 (P)	"2.12. Drive blocking 206x SF A" on page 20
–	Dead man's handle	32 (B)	"2.13. Dead man's handle 206x SF A" on page 21

DTS 1000102756 EN Version: AF Status: RL (released | freigegeben | valide) printed: 24.07.2024

2. Product accessories

2.1. Pneumatic control/electrical feedback unit

Type 8697 and Type 8690 for on/off process valves


Note:

- Non-retrofitable components are only orderable in combination...system Type 8801.
- The feedback unit of Type 8690 for CLASSIC process valves is covered by the electrical feedback unit of Type 8697.

Variant	Pneumatic control (with pilot valve) Type 8697 ▶	Electrical feedback (without pilot valve) Type 8697 ▶	Pneumatic control (with pilot valve) Type 8690 ▶	
Pictures				
Type description	<p>The pneumatic control and feedback unit Type 8697 is designed for integrated mounting on process valves of the CLASSIC series 20XX and ELEMENT series 21XX with a small nominal size. Mechanical or inductive limit switches detect the valve position and report it electrically to the control unit.</p> <p>An intrinsically safe variant in accordance with ATEX / IECEx is optionally available for use in potentially explosive environments.</p>	<p>The electrical feedback variant of Type 8697 is optimised for integrated mounting on process valves of the CLASSIC 20XX and INOX 206X series.</p> <p>Mechanical or inductive limit switches detect the valve position and report it electrically to the control unit.</p> <p>The feedback unit Type 8697 can be combined with all available actuator sizes for CLASSIC.</p> <p>An intrinsically safe variant in accordance with ATEX / IECEx is optionally available for use in potentially explosive environments.</p>	<p>The pneumatic control unit Type 8690 is designed for the decentralised automation of ELEMENT series pneumatic process valves. Mechanical or inductive limit switches detect the valve position. The integrated pilot valve controls single-acting or double-acting actuators.</p> <p>An intrinsically safe variant in accordance with ATEX / IECEx is optionally available for use in potentially explosive environments.</p>	
Features				
Drive series	ELEMENT	CLASSIC	INOX (Edelstahl)	ELEMENT
Actuator size (Ø) in mm	50 (D)	40 (C), 63 (E), 80 (F), 100 (G), 125 (H), 175 (K), 225 (L)	50 (D), 70 (M), 90 (N), 130 (P)	70 (M), 90 (N), 130 (P)
Attachment to seat valves	Type 2100, Type 2101, Type 2106	Type 2000, Type 2012, Type 2006	Type 2060	Type 2100, Type 2101, Type 2106
Attachment to diaphragm valves	Type 2103, Type 2104, Type 2105	Type 2030, Type 2031, Type 2032, Type 2033	Type 2063, Type 2064, Type 2065	Type 2103, Type 2104, Type 2105
End position indicator	Micro or proximity switch			
Position indicator	Optical display pen			
Approvals	ATEX Cat. 3GD / IECEx, ATEX Cat. 2DG / IECEx			
Fieldbus communication	No			
Electrical connection	Cable gland or M12 plug connector			

DTS 1000102756 EN Version: AF Status: RL (released | freigegeben | validé) printed: 24.07.2024

Type 8691 and Type 8695 for decentralised automation of on/off ELEMENT-und CLASSIC process valves

Variant	Control head/electrical feedback unit			
	Type 8691 ▶		Type 8695 ▶	
Pictures				
Type description	<p>The control head Type 8691 is designed for the decentralised automation of the ELEMENT series pneumatic process valves. The valve position is detected via a contactless, analogue sensor element which automatically detects and saves the valve end positions during commissioning via the teach function. The integrated pilot valve controls single-acting or double-acting actuators. The design of the control head and actuator is specially conceived for the requirements of hygienic process conditions and enables internal control air routing without external pipework.</p>		<p>The control head Type 8695 is designed for the decentralised automation of ELEMENT series pneumatic process valves with a small nominal size. The valve position is detected via a contactless, analogue sensor element which automatically detects and saves the valve end positions during commissioning via the teach function. The integrated pilot valve controls single-acting or double-acting actuators. The design of the control head and actuator is specially conceived for the requirements of hygienic process conditions and enables internal control air routing without external pipework.</p>	
Features				
Drive series	ELEMENT	CLASSIC	ELEMENT	CLASSIC
Actuator size (Ø) in mm	70 (D), 90 (N), 130 (P), 225 (L)	63 (E), 80 (F), 100 (G), 125 (H), 175 (K), 225 (L)	50 (D)	40 (C), 50 (D)
Attachment to seat valves	Type 2100, Type 2101, Type 2106	Typ 2000, Typ 2012, Typ 2006	Type 2100, Type 2101, Type 2106	Typ 2000, Typ 2012, Typ 2006
Attachment to diaphragm valves	Type 2103, Type 2104, Type 2105	Typ 2030, Typ 2031, Typ 2032, Typ 2033	Type 2103, Type 2104, Type 2105	Typ 2030, Typ 2031, Typ 2032, Typ 2033
End position indicator	Non-contact inductive position detection with teach function		Non-contact inductive position detection with teach function	
Status indicator	Coloured high-power LEDs		Coloured LEDs	
Approvals	ATEX Cat. 3GD, IECEx		ATEX Cat. 3GD, IECEx	
Fieldbus communication	AS-Interface, IO-Link, Bürkert system bus (büS)		AS-Interface, IO-Link, Bürkert system bus (büS)	
Electrical connection	Cable gland or M12 plug connector		M12 plug connector	

DTS 1000102756 EN Version: AF Status: RL (released | freigegeben | valide) printed: 24.07.2024

2.2. Type 1060 – Electrical position feedback for CLASSIC and ELEMENT valves

The SC02 electrical feedback unit for INOX valves in actuator size $\varnothing 32$ (B) mm can be retrofitted to all actuators in this series. The included initiator is screwed into the bonnet and detects the closed position of the actuator.

Note:

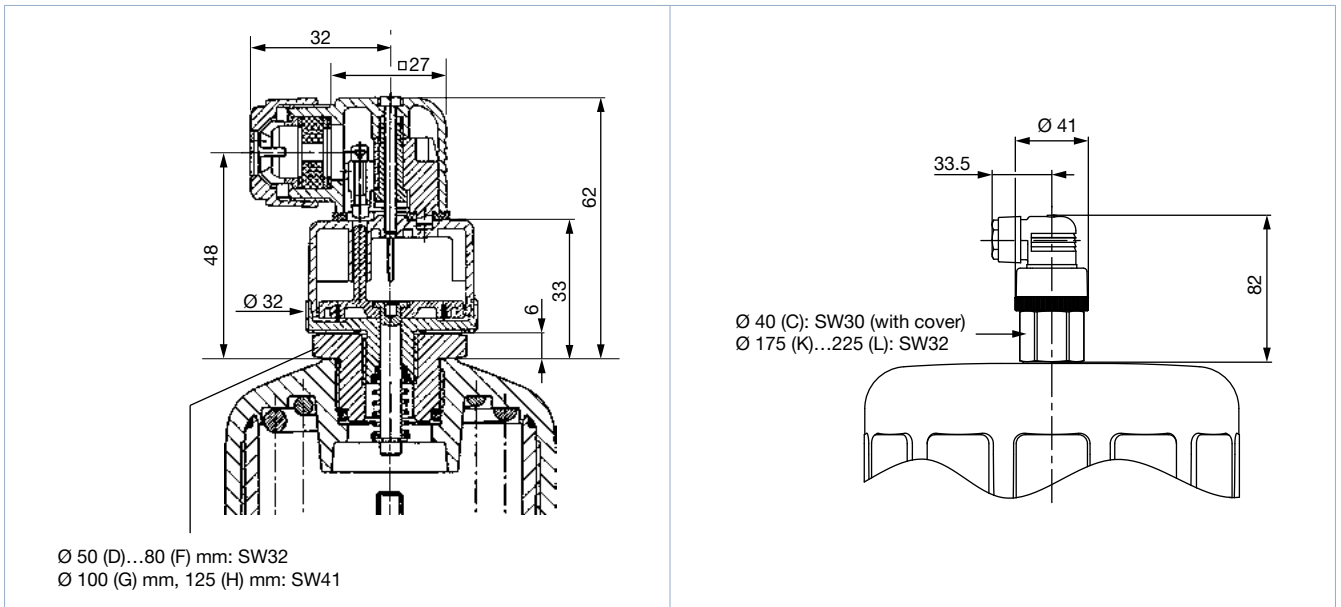
Further information can be found in data sheet [Type 1060](#) ▶.



Dimensions

Note:

Dimensions in mm



Ordering chart

Valve actuator series	Actuator size \varnothing	Article no.
	[mm]	
CLASSIC	40 (C)	293113 ^{1.)}
	40 (C) (seat valve)	158244
	40 (C) (diaphragm valve)	158220
	50 (D)...80 (F)	701515
	100 (G), 125 (H)	701516
	175 (K), 225 (L)	655696
ELEMENT	50 (D)	673963
	70 (M)...130 (P)	673964

1.) For valves built as of 2016

2.3. Proximity switch adapters for CLASSIC, ELEMENT and INOX valves

The adaptation for proximity switches is available for all actuator series and control functions and can easily be retrofitted instead of the normal position indicator. They are available in single and double variants, depending on which valve position is to be queried.

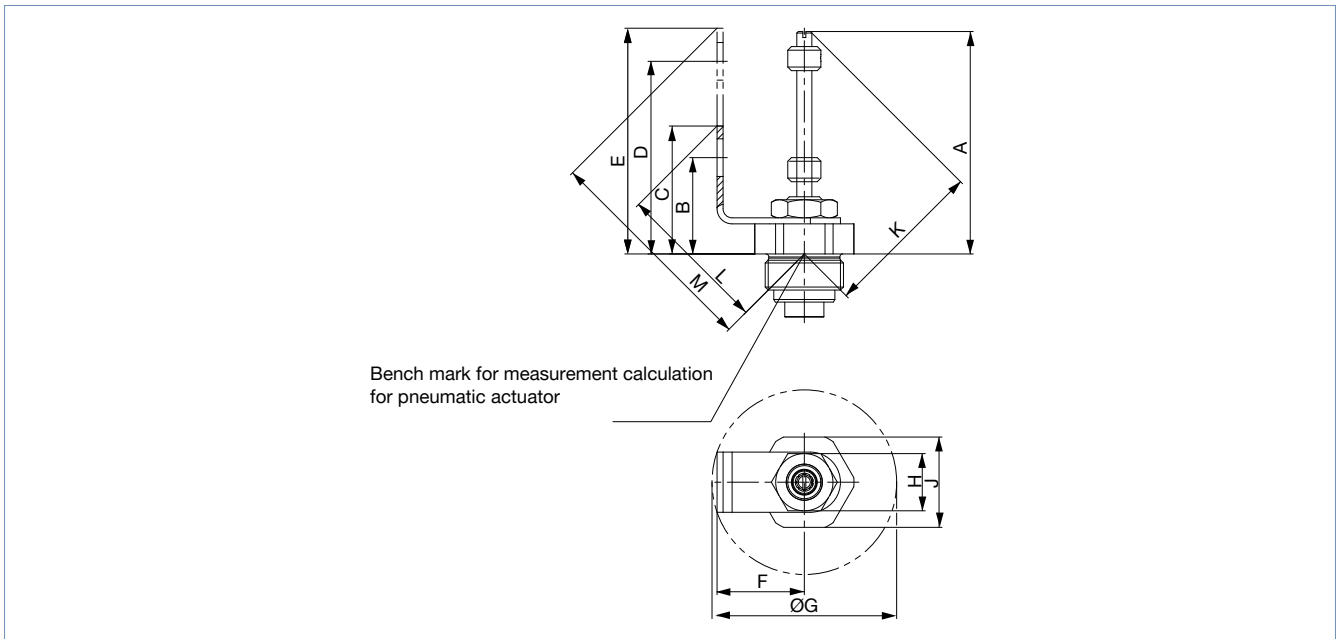


Dimensions

Note:

Dimensions in mm

Adapter for proximity switches M12 x 1/Mounting bracket

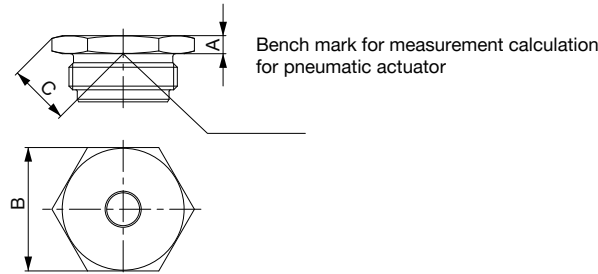


Sensor	Actuator size Ø [mm]	A	B	C	D	E	F	Ø G	H	J	K			M	Article no.
											45° (inclined seat)	40° (bottom outlet)	35° (bottom outlet)		
Single (CLASSIC)	50 (D), 63 (E), 80 (F)	66	32	43	-	-	29	62	SW19	SW30	44 47 50	51 52 52	-	649381	
	100 (G), 125 (H)	81	35	46	-	-	29	62	SW19	SW30	52 56 59	53 54 54	-	649382	
Double (CLASSIC)	50 (D), 63 (E), 80 (F)	81	28	-	74	85	24	52	SW19	SW30	59 63 68	-	78 81 84	667988	
	100 (G), 125 (H)	96	31	-	77	88	24	52	SW19	SW30	69 75 80	-	80 83 86	667989	
	175 (K), 225 (L)	145	68	-	136	147	24	52	SW19	SW30	104 112 120	-	106 111 116	669810	
Single (INOX)	50 (D), 70 (M)	91	33	44	-	-	29	26	SW18	SW30	66 71 76	52 52 53	-	699989	
	90 (N), 130 (P)	46	41	53	-	-	22	38	SW18	SW30	51 55 58	54 55 57	-	699991	
Double (INOX)	50 (D), 70 (M)	93	29	-	75	86	24	26	SW18	SW30	67 73 78	-	78 82 85	699990	
	90 (N), 130 (P)	94	30	-	76	87	25	38	SW18	SW30	68 74 78	-	79 83 86	699992	
Single (ELEMENT)	50 (D)	55	36	47	-	-	26	20	SW18	SW17	41	52	-	279579	
											44	53			
											46	54			
70 (M), 90 (N), 130 (P)	70	38	49	-	-	26	42	SW18	SW19	51	53	-	279578		
										55	54				
										58	55				
Double (ELEMENT)	50 (D)	95	38	-	88	99	29	42	SW18	SW19	69	-	90	674052	
											74	-	94		
											79	-	97		
70 (M), 90 (N), 130 (P)	95	36	-	86	97	29	20	SW18	SW17	69	-	89	674053		
										74	-	93			
										79	-	96			

DTS 1000102756 EN Version: AF Status: RL (released | freigegeben | valide) printed: 24.07.2024

Adapter for proximity switch

The simple adaptation for M12 initiators is mounted instead of the normal position indicator and records the open valve position. Due to the lack of sealing of the upper actuator chamber, this cost-effective variant is only suitable for control function A.



Actuator size Ø [mm]	A	B	C 45° (inclined seat) 40° (bottom outlet) 35° (bottom outlet)	Article no.
40 (C)	25	SW30	30	o. r.
50 (D), 63 (E), 80 (F)	6	SW32	17	648152
			16	
			15	
100 (G), 125 (H)	6	SW41	21	649257
			20	
			18	
175 (K), 225 (L)	29	SW32	34	669773
50 (D), 70 (M) (INOX)	16	SW19	20	698536
90 (N), 130 (P) (INOX)	17	SW36	26	698537
50 (D) (ELEMENT)	20	SW17	22	673967
70 (M), 90 (N), 130 (P) (ELEMENT)	19	SW24	24	673968 (PPS)
	14		21	581139 (VA)

o. r. = on request

2.4. Stroke limiter for stroke actuators for CLASSIC valves

General technical data

Maximum stroke limitation without visual position indicator

Actuator size Ø [mm]		Product properties
40 (C)...80 (F)	Ø 175 (K)...225 (L)	
		Maximum stroke limitation Special feature Without visual position indicator (upper stroke limitation only) Mounting Screw in stroke limiter (instead of the transparent cover for the visual position indicator). For Ø 100 (G) mm and Ø 125 (H) mm, the actuator cover must be removed for mounting. To do this, a special key is required (see “Ordering chart for mounting key (for actuator cover)” on page 9).

Minimum/maximum stroke limitation with visual position indicator

Actuator size Ø [mm]		Product properties
50 (D)...80 (F)	175 (K)...225 (L)	
		Minimum/maximum stroke limitation Special feature Minimum/maximum flow setting (upper and lower stroke limitation) with visual position indicator Mounting The actuator cover must be removed for mounting. To do this, a special key is required (see “Ordering chart for mounting key (for actuator cover)” on page 9). The variant for drive size Ø 175 (K) mm cannot be retrofitted and must be installed at the factory.

Dimensions

Note:

Dimensions in mm

Actuator size Ø 40 (C)...225 (L) mm (maximum stroke limitation) (single variant, only for valves with control function A, closed by spring force in rest position)			Actuator size Ø 50 (D)...175 (K) mm (minimum/maximum stroke limitation)		
Actuator size Ø [mm]	B	H	Actuator size Ø [mm]	D	H
40 (C), 50 (D), 63 (E), 80 (F)	SW 17	40	50 (D), 63 (E), 80 (F)	39	50
100 (G), 125 (H)	SW 19	55	100 (G), 125 (H)	53	73
175 (K), 225 (L)	SW24	97	175 (K), 225 (L)	86	172

DTS 1000102756 EN Version: AF Status: RL (released | freigegeben | valide) printed: 24.07.2024

Ordering chart

Maximum stroke limitation without visual position indicator

Actuator size Ø [mm]	Article no.
40 (C)...80 (F)	637866
100 (G)	637867
125 (H)	637868
175 (K), 225 (L)	655600

Minimum/maximum stroke limitation with visual position indicator

Actuator size Ø [mm]	Article no.
50 (D)...80 (F)	636820
100 (G)	636821
125 (H)	640703
175 (K), 225 (L) (diaphragm valves)	655631
175 (K) (globe valve)	659038
225 (L) (globe valve)	659423

2.5. Stroke limiter for stroke actuators for ELEMENT valves

General technical data

Maximum stroke limitation without visual position indicator

Actuator size Ø		Product properties	
50 (D)	70 (M)...130 (P)		
		Maximum stroke limitation	
		Special feature	Without visual position indicator (upper stroke limitation only)
		Mounting	Screw in stroke limiter (instead of the transparent cover for the visual position indicator). Actuator size 50 (D) mm...130 (P) can be easily retrofitted.

Minimum/maximum stroke limitation with visual position indicator

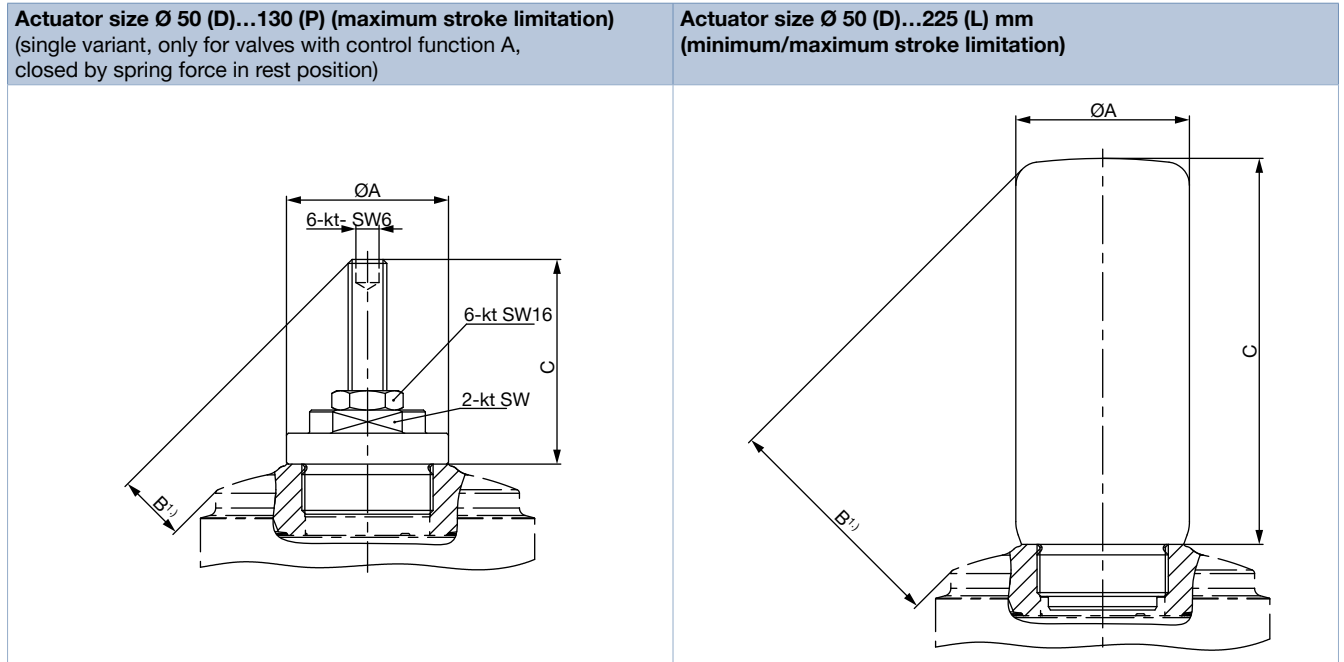
Actuator size Ø		Product properties	
50 (D)	70 (M)...130 (P), 225 (L)		
		Minimum/maximum stroke limitation	
		Special feature	Minimum/maximum flow setting (upper and lower stroke limitation) with visual position indicator
		Mounting	Screw in stroke limiter (instead of the transparent cover for the visual position indicator). Actuator size 50 (D) mm...130 (P) can be easily retrofitted.

DTS 1000102756 EN Version: AF Status: RL (released | freigegeben | validé) printed: 24.07.2024

Dimensions

Note:

Dimensions in mm



Actuator size Ø [mm]	A	B	C	2-kt SW	Article no.	Actuator size Ø [mm]	A	B	C	Article no.
50 (D)	20	15	40	17	677535	50 (D)	27	38	66	673950
70 (M)	42	18	53	24	673962	70 (M)	45	61	100	673951
90 (N)		16				90 (N)		59		
130 (P)		2				130 (P)		45		
						225 (L) ^{2.)}	86	93	184	60011493

1.) Measurement B for angle-seat valves



2.) The min./max. stroke limiter for ELEMENT actuators with actuator size 225 (L) can only be fitted at the factory and can only be ordered together with the valve.

DTS 1000102756 EN Version: AF Status: RL (released | freigegeben | validé) printed: 24.07.2024


2.6. Stroke limiter for linear actuators for INOX valves

General technical data

Maximum stroke limitation without optical position indicator

Actuator size Ø [mm]		Product properties	
32 (B)	50 (D)...130 (P)		
		Minimum/maximum stroke limitation	
		Special feature	Without optical position indicator (only stroke limitation upwards)
		Mounting	Screw in stroke limiter (instead of the transparent cover for the optical position indicator).s <ul style="list-style-type: none"> • Ø 32 (B) is only available for actuators with pilot air connection G 1/8. • Easy to retrofit

Minimum/maximum Stroke limiter with optical position indicator

Actuator size Ø [mm]		Product properties	
50 (D)...130 (P)			
		Minimum/maximum stroke limitation	
		Special feature	Minimum/maximum flow setting (stroke limitation at top and bottom) with visual position indicator
		Mounting	Screw in the stroke limiter (instead of the transparent cover for the optical position indicator). Easy to retrofit

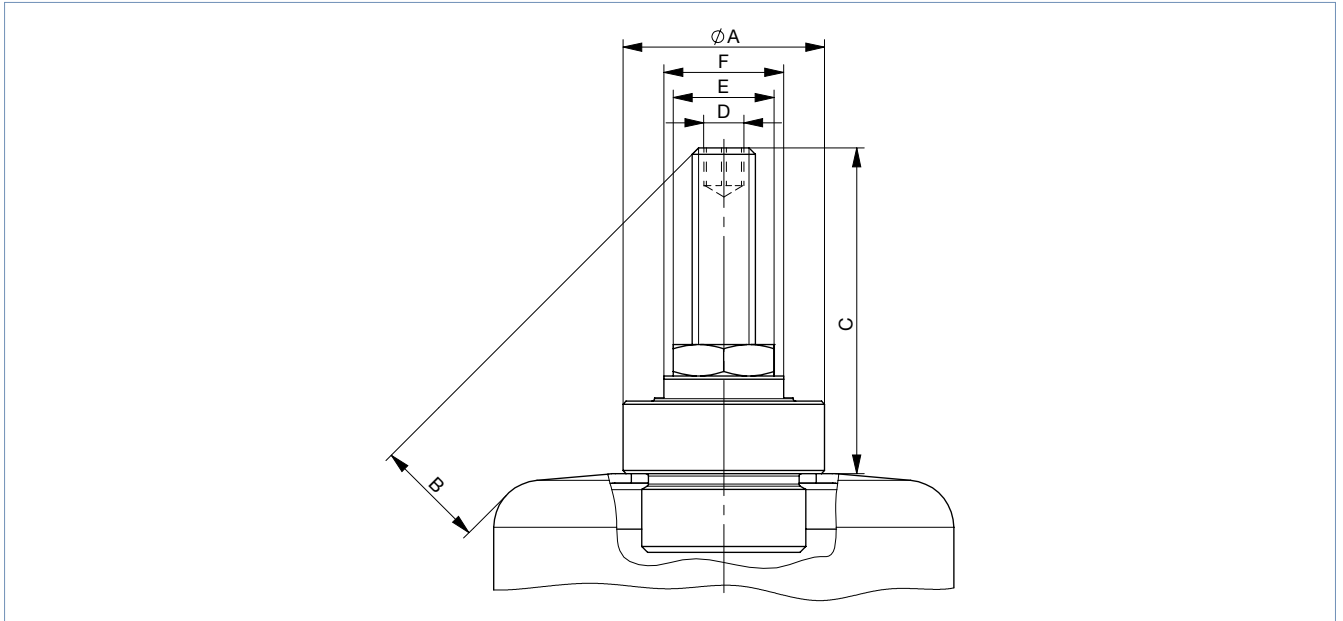
Dimensions

Note:

Dimensions in mm

Actuator size Ø 32 (B)...130 (P) (maximum stroke limitation)

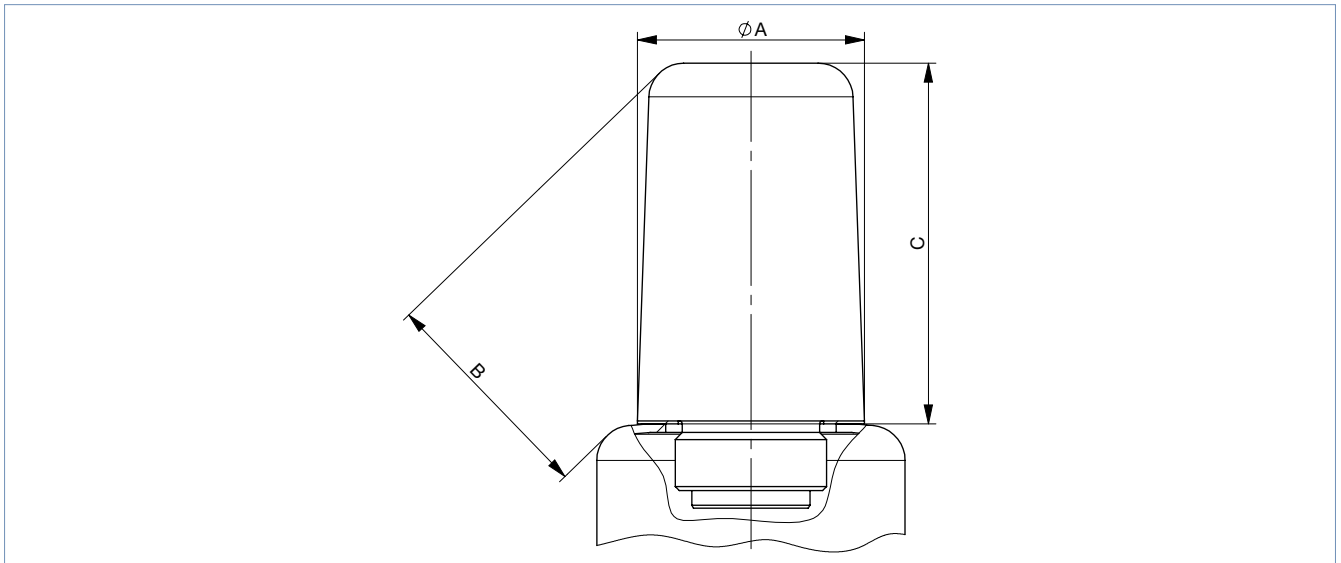
(single variant, only for valves with control function A, closed by spring force in rest position)



Actuator size Ø [mm]	A	C	B 45° (inclined seat) 40° (bottom outlet) 35° (bottom outlet)	D (6-kant)	E (6-kant)	F (2-kant)	Article no.
32 (B) Only for actuators with control air connection G 1/8	18	28	11 13 16	SW4	SW13	SW13	20061596
50 (D) 70 (M)	32	52	18 23 28	SW6	SW16	SW19	699550
90 (N) 130 (P)	42	51	11 16 22		SW18	SW24	699994

DTS 1000102756 EN Version: AF Status: RL (released | freigegeben | validé) printed: 24.07.2024

Actuator size Ø 50 (D)...130 (P) (minimum/maximum stroke limitation)



Actuator size Ø [mm]	A	C	B 45° (inclined seat) 40° (bottom outlet) 35° (bottom outlet)	Article no.
50 (D)	39	62	38	699986
70 (M)			42	
			46	
90 (N)	53	116	70	699998
130 (P)			79	
			86	

DTS 1000102756 EN Version: AF Status: RL (released | freigegeben | validé) printed: 24.07.2024

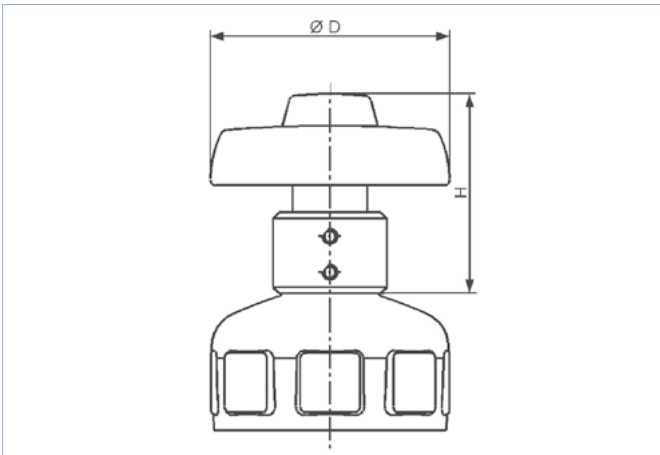
2.7. Handwheel for linear actuators for CLASSIC valves

Handwheel with visual position indicator for manual actuation of the valve, e.g. in the event of a pressure failure. Only for actuators with control function A, closed by spring force.



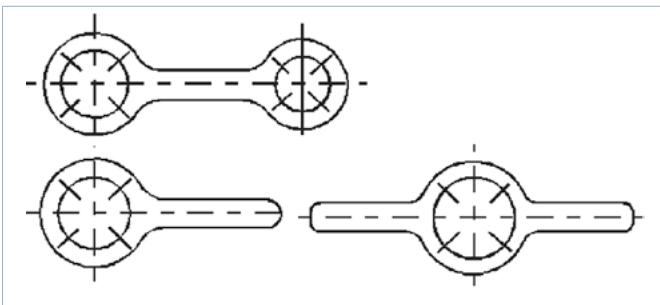
Dimensions

Note:
Dimensions in mm



Actuator size Ø [mm]	D	H	Article no.
50 (D), 63 (E), 80 (F)	80	68	636822
100 (G), 125 (H)	150	85	636823

2.8. Ordering chart assembly spanner (for CLASSIC drive cover)



Actuator size Ø [mm]	Article no.
40 (C), 50 (D)	639175
63 (E)	639170
80 (F)	639171
100 (G)	639172
125 (H)	639173

DTS 1000102756 EN Version: AF Status: RL (released | freigegeben | validé) printed: 24.07.2024

2.9. NAMUR adapter for pilot valves for CLASSIC valves

General technical data

	Product properties								
	Material Plate and hollow screw Stainless steel 1.4021 or CuZn39 Pb3 F44 Seal: O-ring NBR 75								
	Mounting for NAMUR adapter								
	<table border="1"> <thead> <tr> <th>No.</th> <th>Description</th> </tr> </thead> <tbody> <tr> <td>1</td> <td>Plate</td> </tr> <tr> <td>2</td> <td>Hollow screw</td> </tr> <tr> <td>3</td> <td>O-rings</td> </tr> </tbody> </table>	No.	Description	1	Plate	2	Hollow screw	3	O-rings
No.	Description								
1	Plate								
2	Hollow screw								
3	O-rings								

Dimensions

Note:

Dimensions in mm

Variant 1	Variant 2
<p>NAMUR adapter for stroke actuator</p> <ul style="list-style-type: none"> • Ø 50 (D)...80 (F) for angle seat and globe valves • Ø 63 (E)...100 (G for diaphragm valves) <p>NAMUR adapter for rotary actuator Ø 63 (E) on request</p>	<p>NAMUR adapter for stroke actuator</p> <ul style="list-style-type: none"> • Ø 100 (G) mm, 125 (H) for angle seat and globe valves • Ø 125 (H) for diaphragm valves <p>NAMUR adapter for rotary actuator Ø 100 (G) mm</p>

Ordering chart

Actuator size Ø	Material	Article no.
[mm]		
Variant 1	Stainless steel	632974
Variant 2	Stainless steel	634275
Variant 1	Brass	637113
Variant 2	Brass	637114

DTS 1000102756 EN Version: AF Status: RL (released | freigegeben | valide) printed: 24.07.2024

2.10. Type SY02ST – Electrical position feedback for INOX valves with actuator size Ø 32 (B)

The electrical feedback Type SY02ST is optimised for integrated mounting on process valves of the INOX Type series for actuator size Ø 32 (B) mm. Inductive limit switches register the position of the valve and give an electrical feedback signal to the control system.

Besides the electrical position feedback signal, the position of the valve is visually shown via LEDs. The housing is easy to clean and offers practical electrical IP protection materials for use in hygienic processing, in food, beverage and pharmaceutical industries.

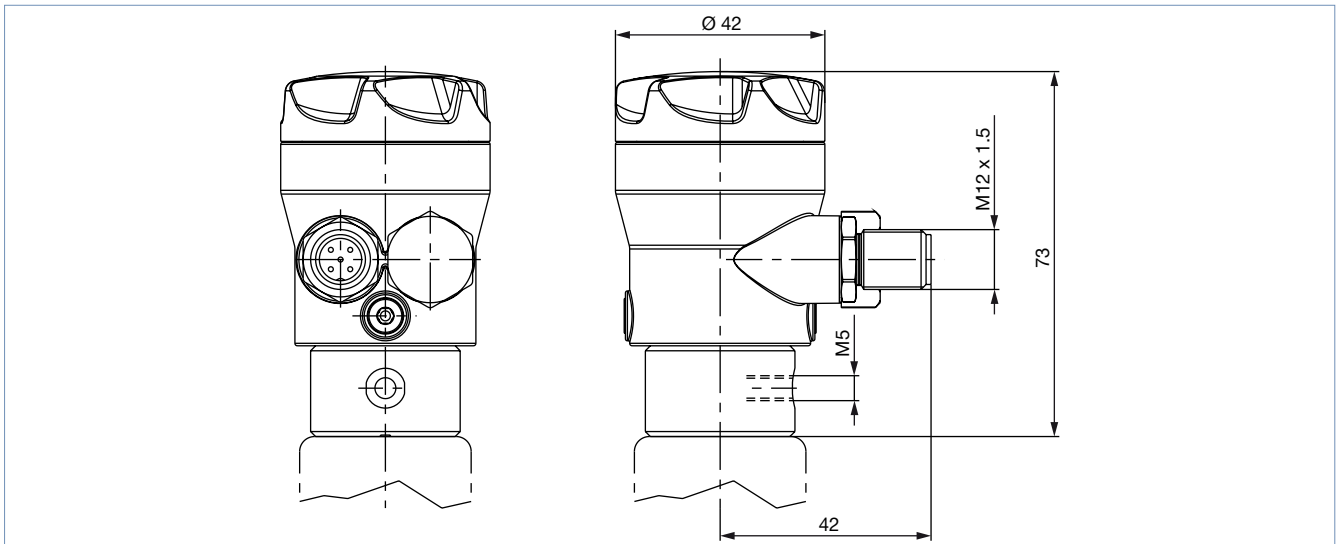
General technical data

	Product properties	
	Material	
	Housing	PPS
	Cover	PC
	Adaption	Stainless steel
	Seal	EPDM/FKM
	Stroke range of valve spindle	2...6 mm
	Electrical data	
	Operating voltage	
	Micro switch	24 V DC ± 10 %, max. 100 mA short-circuit proof
	Position feedback	2x reed switch, closing contact (2-wire) with LEDs
	Protection class	3 according to DIN EN 61140
	Electrical connection	
	Multipole	M12, 4-pin
	Environment and installation	
Ambient temperature	-20 °C...+60 °C	
Installation	As required, preferably with actuator in upright position	
Degree of protection	IP65 and IP67 according to EN 60529, Type 4X	

Dimensions

Note:

Dimensions in mm



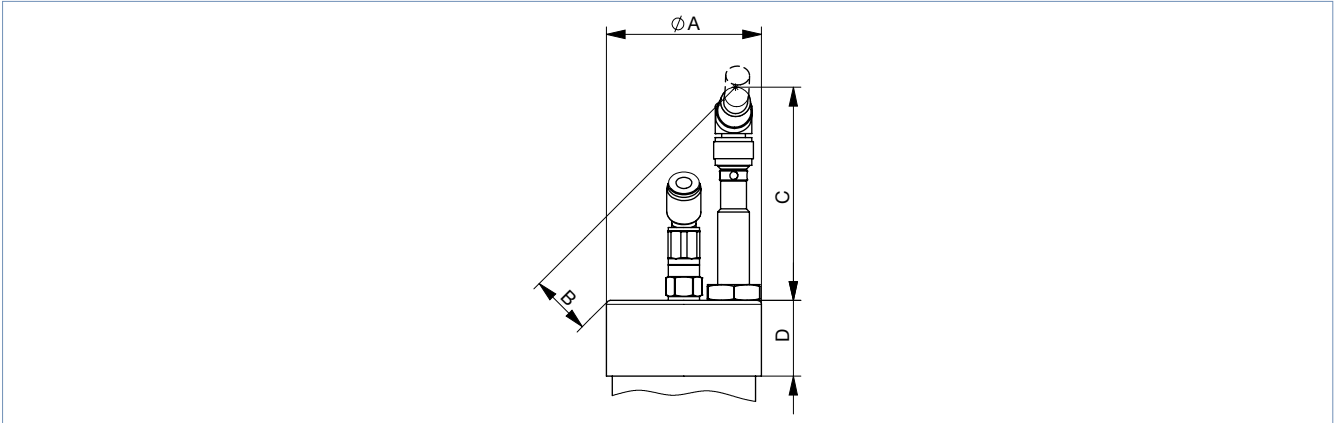
Ordering chart

Description	Type	Actuator size Ø	Article no.	
		[mm]	Circuit function A	Circuit function B
Electrical position feedback with adaptation	Type 2060	32 (B)	1.)	1.)
	Type 2063			
	Type 2080			

1.) Must be ordered as system – please contact the appropriate Bürkert sales office.

2.11. Type SC02 Electrical position indicator for INOX valves in actuator size Ø 32 (B)

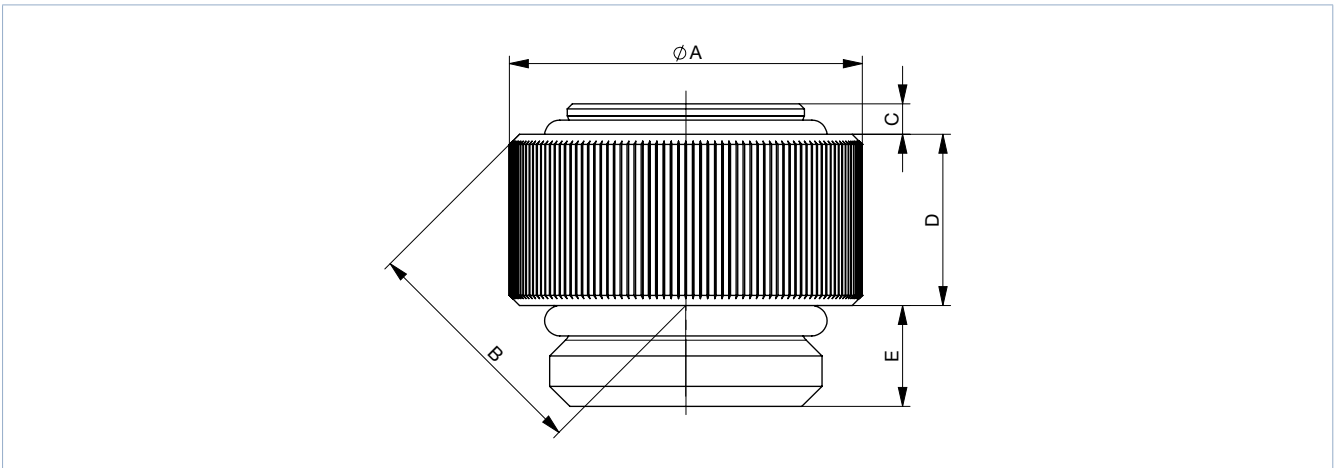
The SC02 electrical feedback unit for INOX valves in actuator size Ø 32 (B) can be retrofitted to all actuators in this series. The included initiator is screwed into the bonnet and detects the closed position of the actuator.



Actuator size Ø [mm]	A	B 45° (inclined seat) 40° (bottom outlet) 35° (bottom outlet)	C	D	Article no.
32 (B) (SFB, 4 mm)	39	17	54	19	583555
32 (B) (SFB, 6 mm)		22			586253
32 (B) (SFA, 4 mm)		27			60005041

2.12. Drive blocking 206x SF A

The actuator blocking is used to keep NC (normally closed) valves open in certain situations when no control pressure is available – for example when the entire valve is to be autoclaved.



Actuator size Ø [mm]	A	B 45° (inclined seat) 40° (bottom outlet) 35° (bottom outlet)	C	D	E	Article no.
50 (D)	35	24	3	17	10	20055972
70 (M)						
90 (N)	42	28	5	19	10	20055973
130 (P)						

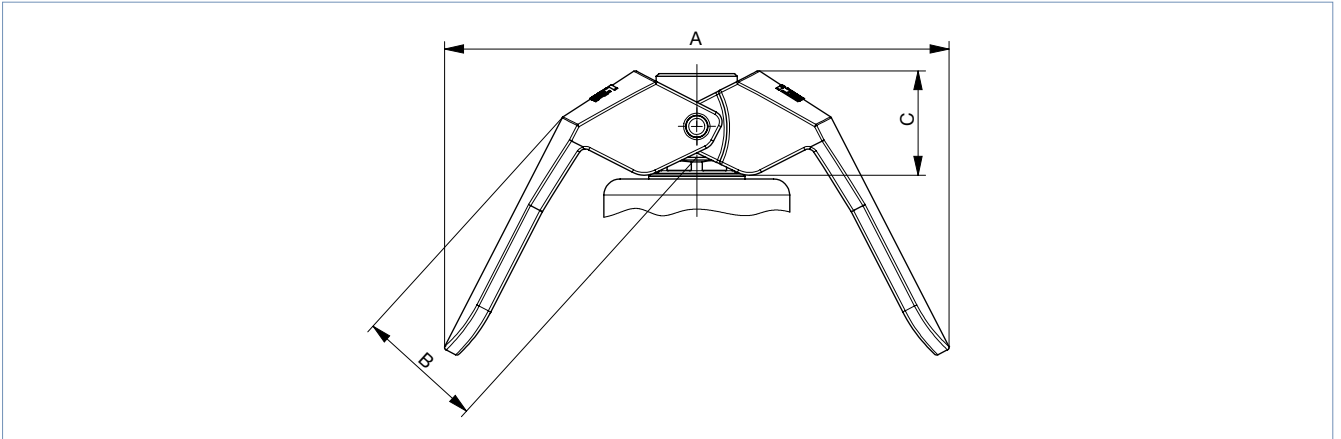
DTS 1000102756 EN Version: AF Status: RL (released | freigegeben | validé) printed: 24.07.2024

2.13. Dead man's handle 206x SF A

This conversion kit converts any pneumatically operated actuator from the INOX series (Ø 32 (B) mm) into a manually operated/unpressurised “push-button”. This means that the valve only remains open as long as the levers are actuated. When the levers are released, the valve closes automatically with the normal actuator spring force.

An application case would be, for example, a sampling valve where it must be ensured that the valve is closed again as soon as the operator leaves.

Dimensions



Ordering chart

Actuator size Ø [mm]	A	B 45° (inclined seat) 40° (bottom outlet) 35° (bottom outlet)	C	Article no.
32 (B)	94	24	20	20043467
		23		
		21		

DTS 1000102756 EN Version: AF Status: RL (released | freigegeben | validé) printed: 24.07.2024

2.14. Stroke limitation on Type 869x ELEMENT

The simple stroke limiter for limiting the maximum opening enables the simultaneous use of control heads from the series below.

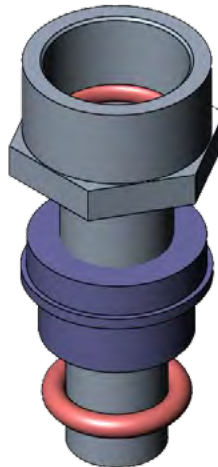


Ordering chart

Actuator size Ø [mm]	Typ	Article no.
70 (M), 90 (N)	Type 8690	680594
70 (M), 90 (N)	Type 8691, Type 8692, Type 8693, Type 8694	679013
130 (P)		684134

2.15. Stroke limitation on Type 869x CLASSIC

The simple stroke limiter for limiting the maximum opening enables the simultaneous use of control heads from the series below.



Ordering chart

Actuator size Ø [mm]	Type	Article no.
50 (D), 63 (E)	Type 8690, Type 8691, Type 8695, Type 8697	689353
80 (F)		689354
100 (G), 125 (H)		689355